



Pascal Imana Ndagijimana
Co-Country Leader



2021 UPDATE

RWANDA



Emmanuel Ndolimana
Co-Country Leader

Those fed...



Many times our teams provided much-needed food to serve at JFYM Forums----->

Every country around the world has been affected by the pandemic throughout 2021, including our Reach Out communities.

Yet, Reach Out's global leaders reported again and again ways that God continued to move through their countries despite the challenges from the ensuing pandemic, newly implemented country regulations and restrictions, and some countries directly facing conflicts of war.

But God showed himself faithful through it all, with new JFYM certifications, thousands of newly trained JFYM youth leaders, opened up new countries, and hundreds of newly saved believers.

Many pictures provided to us revealed God's mercy and greatness throughout our nation and those we serve in other countries around the globe.

Thank you for your continued financial partnership and dedication to help us in preparing these leaders to be more ready than ever in 2022, and bring even more of Generation Alpha to Jesus in this coming year!





JFYM Forum



Social distancing at JFYM Forum



JFYM Forum Graduates

And many fed
with God's word...



Social distancing while learning the 6 essential
teaching principles of Jesus-Focused Youth Ministry

JFYM Leaders Certified

Even in the midst of the pandemic, our Rwanda team persevered with coaching, training, praying, and leadership meetings. Ultimately, many leaders received their new JFYM certificates to reach even more of the youth with the Gospel! JFYM graduates have the opportunity to become JFYM certified after going to 3 trainings [inset].



Despite the challenges the nation of Rwanda faces, God was so faithful throughout the pandemic and other crises throughout 2021. 30% of its children do not go school after primary school, and 40% of its people live below the poverty line, so at most JFYM Forums, our leaders make a tremendous effort to serve them with food and open arms. Last year the country made some headway with its poverty issues, but there is still a long way to go.

In January, numerous Jesus-Focused Youth Ministry attendees became certified as JFYM leaders which incorporate the 6 essential teaching principles of Jesus. This forum also coincided with Co-Country Leaders, Pascal Imana and Emmanuel Ndolimana, meeting with Regional Leader, Obadiah Ogesi, and DRC Country Leader, Mwema Bertin, at the beginning of 2021 to help encourage and strengthen them for Reach Out's 2021 plan [inset].

Social distancing had to take place at every JFYM Forum in 2021 due to the strict Covid-19 restrictions initiated by its government. In November, Pascal shared with us that the November Forum still had 46 attendees, 2 of whom gave their lives to Jesus as Lord at the forum!

Thank you for being a part of this journey and your contributions to what God is doing in Rwanda! Reach Out and our country team are very grateful for your dedication and service in making these things and more happen in this nation!

We look forward to providing you more of these stories and photos in 2022!



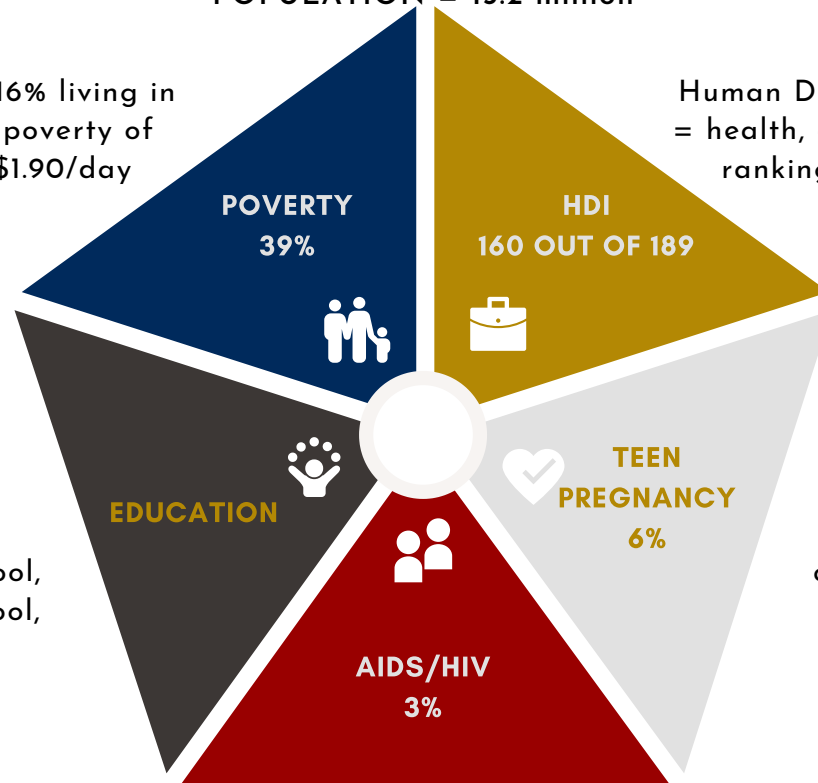


COUNTRY STATISTICS RWANDA

POPULATION = 13.2 million

39% with 16% living in extreme poverty of under \$1.90/day

Human Development Index = health, education, income rankings in the world



Women have on average 4.2 children by 49-years-old, more than 38% of children are stunted due to malnutrition

Rate of women higher at 3.1% and men at 1.8%

Challenges

- Landlocked country not having access to seas for trade and growth
- Prone to natural disasters of droughts, floods, landslides, earthquakes, and volcanic eruptions
- 162,000+ refugees from DRC and Burundi that they are caring for, with 50%+ being children
- Highly overpopulated, reducing resources
- 50% of girls have experienced childhood violence
- 40% of the population is under 14-years-old, 78% under 35-years-old
- 69% have access to only basic sanitation services [not safe], 12% have access to safe drinking water, 60% with access to basic drinking water, only 25% have access to hand-washing facility
- 19.4 unemployment rate

Reach Out

- A gift of \$1,000 helps indigenous leaders train 50 youth pastors through an "in-person" forum in their country.
- A gift of \$500 helps provide scholarships to train and mentor 20 youth pastors online.
- A gift of \$200 (\$3.85 per week) helps us equip 1 leader for 1 year, with the goal of that leader moving from being introduced to JFYM to implementing and multiplying JFYM. As a result, that new leader will begin training 3 additional leaders, so that from those 4 new leaders, there are a total of 12 young people disciplined and praying for opportunities to influence 36 of their friends to follow Jesus.
- A monthly gift of \$100 helps us continue current ministry to leaders around the world who are trained and resourced through Reach Out.